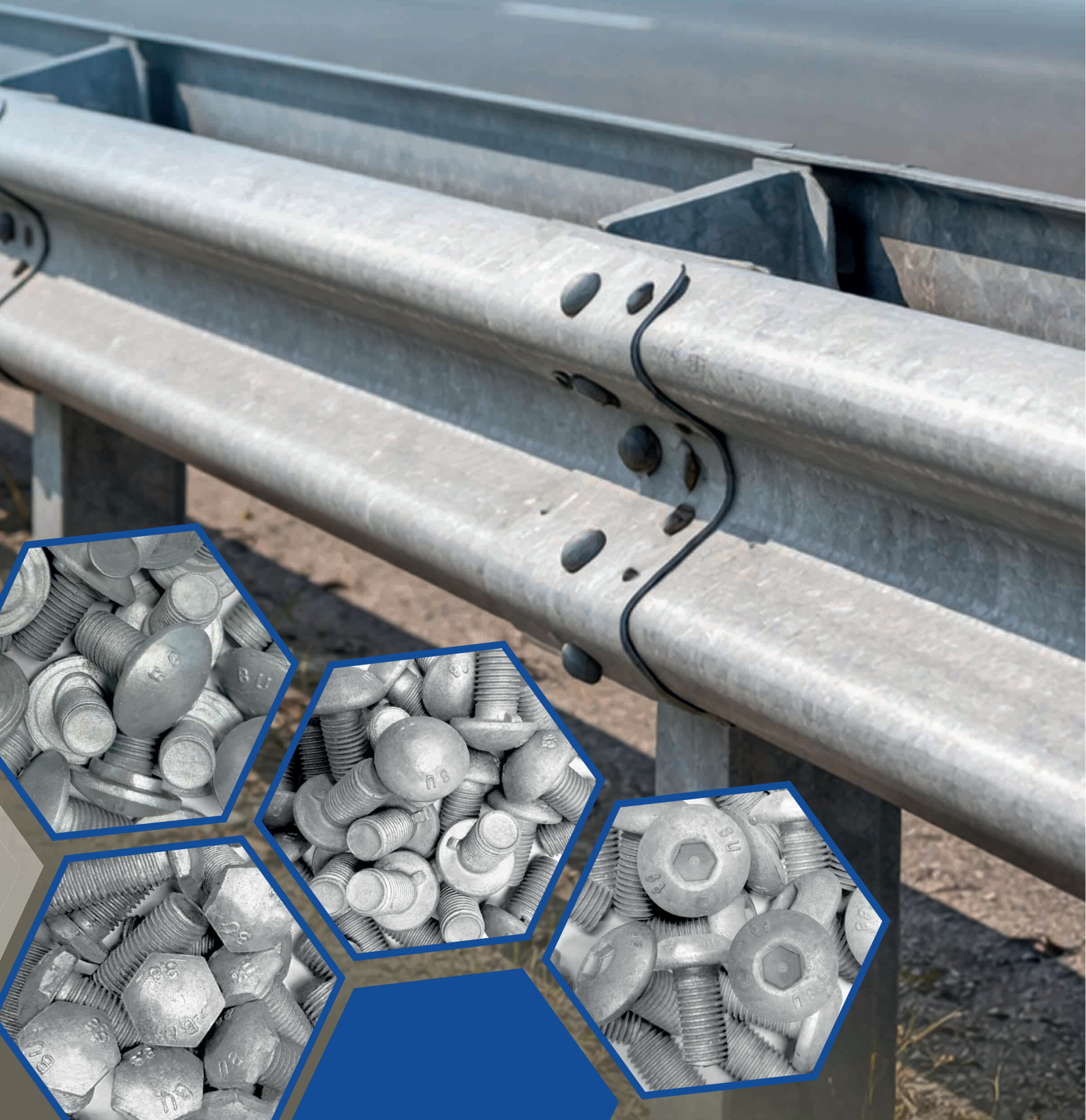




Bulfer

for road safety



BULFER – SINCE 1994

TECHNICAL COMPONENTS FOR ROAD SAFETY

For over thirty years, Bulfer has been synonymous with reliability in the production of fasteners and threaded rods for road infrastructure. Born in 1994, the company has grown to become a strategic partner for all operators in the highway world, thanks to a combination of expertise, quality of materials, and speed of reaction.

We develop fastening solutions designed to last, conceived to guarantee safety and continuity to road works:

- ⬡ **Fasteners for guardrail barriers**
- ⬡ **Fixing systems for New Jersey barriers**
- ⬡ **Screws for crash cushions**
- ⬡ **Components for emergency middle gates**
- ⬡ **Anchors for noise-reduction panels**

From large highway contracts to road maintenance operations, Bulfer fasteners are wherever durability, precision, and quick turnaround times are needed. Trust those who have been making our roads safer for thirty years.



Certifications and Quality Control

We strongly believe in quality, transparency, and compliance with the highest European standards.

For this reason, over the years we have worked with commitment to obtain certifications that today represent a guarantee for our customers and partners.

We have adopted a Quality Management System compliant with the standard **UNI EN ISO 9001:2015**. This certification witnesses our commitment in the following areas:

- Marketing of fasteners and fixing systems;
- Management of technical heat and surface treatment processes;
- Supervision of mechanical working on customer's demand.

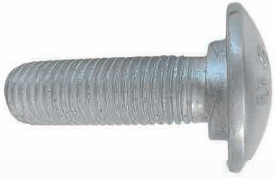
We produce structural components in accordance with Regulation UE 305/2011 (CPR) and standard **EN 1090-1**, up to execution class EXC4 – the highest for steel structural works.

Our certifications allow us to apply the **CE Marking** to our structural products and to operate in full compliance with the requirements for Factory Production Control (FPC).



BULFER PRODUCT

Guardrail Bolts



Guardrail Screws with Oval Neck
M10x35/40/45
from M16x25 to M16x160
Cl. 4.6 - 5.6 - 5.8 - 6.8 - 8.8 - 10.9
HDG - Yellow Zinc Plated



Guardrail Screws with Hexagonal Socket
from M16x25 to M16x140
Cl. 8.8
HDG - Yellow Zinc Plated



Guardrail Screws with Nib
from M16x27 to M16x65
Cl. 4.6 - 6.8 - 8.8
HDG - Yellow Zinc Plated



Guardrail Screws with Hexagonal Panhead
from M16x30 to M16x160
from M12x35 to M12x70
Cl. 8.8 - 10.9
HDG - Yellow Zinc Plated

Tie Rods

Threaded Rods **DIN 975**

1 - 2 - 3 MT
from M6 to M60
C40 - Cl. 4.8 - 8.8 - B7 - Stainless Steel
HDG - Zinc Plated - Plain



Tailor-sized Threaded Rods or Studs

Made by Rolling
C40 - Cl. 4.8 - 8.8 - B7 - Stainless Steel
HDG - Zinc Plated - Plain



Partially Threaded Studs

Made by Turning on full diameter
S235, S275, S355 - JR, J0, J2
HDG - Zinc Plated - Plain



Threaded Rods **45° Cut**

C40 - Cl. 4.8 - 8.8 - B7 - Stainless Steel
HDG - Zinc Plated - Plain



Special Anchors



"Liebig-style" Anchors
M16 - M20
Cl. 8.8
HDG



MAGGY Anchor (patented)
M20
Cl. 8.8 - 10.9
HDG

Drawing-based Tie Rods

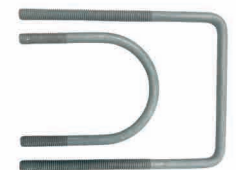
J-shape Threaded Rods (Hook bolts)

C40 - Cl. 4.8 - 8.8 - B7 - Stainless Steel
HDG - Zinc Plated - Plain



U-Bolts / Square U-bolts

Made by Rolling or Turning
S235, S275, S355 - JR, J0, J2
C40 - 8.8 - 10.9 - B7 - Stainless Steel
HDG - Zinc Plated - Plain



Custom bent tie rods

Cl. 8.8
S235, S275, S355 - JR, J0, J2
HDG - Zinc Plated - Plain



Structural Bolting



Structural bolting EN 14399
from M12 to M36
Cl. 10.9
HDG - Plain



Structural bolting EN 15048
Kit Screws ISO 4014/4017+
Nuts ISO 4032
from M10 to M36 Cl. 8.8
HDG - Zinc Plated

Fixing

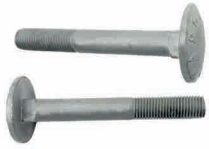
Special Nails

From Ø 24 x 340 to Ø 24x900
Round Head Pins with neck
S235, S355 - JR, J0, J2
HDG - unthreaded w/arrow or 45° end



BULFER PRODUCT

Standard Screws



Cup Head Square Neck Bolts
DIN 603 - ISO 8677
Cl. 4.6 - 4.8 - 8.8 - Stainless Steel
HDG - Zinc Plated – Plain



Hexagon Flange Bolts
DIN 6921 - ISO 1655
Cl. 8.8
HDG - Zinc Plated



Hexagon Head Screws Partially Threaded
DIN 931 - ISO 4014
Cl. 8.8 - 10.9 - Stainless Steel
HDG - Zinc Plated – Plain



Hexagon Head Screws Fully Threaded
DIN 933 - ISO 4017
Cl. 8.8 - 10.9 - Stainless Steel
HDG - Zinc Plated – Plain



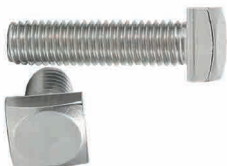
Hexagon Socket Button Head Screws
ISO 7380
Cl. 6.8 - 8.8 - 10.9
HDG - Zinc Plated



Hexagon Socket Cap Head Screws
DIN 912 - ISO 4762
Cl. 8.8 - 10.9 - 12.9
Zinc Plated – Plain



Hexagon Socket Countersunk Head Screws
DIN 7991 - ISO 10642
Cl. 8.8 - 10.9
HDG - Zinc Plated – Plain



Square Head Screws
UNI 5726
Cl. 4.8 - 8.8 - Stainless Steel
HDG - Zinc Plated – Plain

Plates

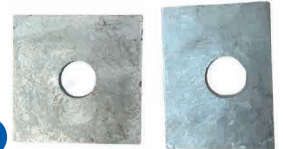
Tailor-Made Plates

S235, S275, S355 - JR, J0, J2
HDG - Zinc Plated – Plain



Foundation Plates

S235, S275, S355 - JR, J0, J2
HDG - Zinc Plated – Plain



Plates with Custom Hole Oval hole – drop hole

S235, S275, S355 - JR, J0, J2
HDG



Washers

Plain Washers

DIN 125 - ISO 7089 - ISO 7091
100HV - 200HV - 300HV - Stainless Steel
HDG - Zinc Plated – Plain – Zinc Flake



Plain Large Washers

DIN 9021 - ISO 7093
100 HV - 200 HV - Stainless Steel
HDG - Zinc Plated – Plain – Zinc Flake



Structural High-Strength Washers

DIN 6916 - EN 14399 - 6
300 HV
HDG - Zinc Plated – Plain



Drawing-based Washers

S235, S275, S355 - JR, J0, J2
HDG - Zinc Plated – Plain



Spring Washers

DIN 127
HDG - Zinc Plated – Plain



BULFER PRODUCT

Nuts



Standard Nuts

DIN 934 - ISO 4032
Cl. 5 - 6S - 8 - 10 - Stainless Steel
HDG oversized/isofit - Zinc Plated - Plain

Rounded Nuts for Culverts

Cl. 8
HDG Oversized



Standard High Nuts

UNI 5587 - ISO 4033
Cl. 6S - 8 - 10 - Stainless Steel
HDG oversized/isofit - Zinc Plated - Plain

Standard Low Nuts

DIN 936 - ISO 4035
Cl. 04 - 05 - Stainless Steel - 17 H
HDG oversized/isofit - Zinc Plated - Plain



Structural High-Strength nuts

DIN 6915 - EN 14399
Cl. 10
HDG Oversized - Plain

Flanged nuts

DIN 6923
Cl. 6S - Stainless Steel
HDG oversized/isofit - Zinc Plated - Plain



Nuts in Square Cage

Cl. 5S
Zinc Plated - Stainless Steel

Self-locking Nuts

DIN 982 - DIN 980 - ISO 7040
Cl. 6S - 8 - 10 - Stainless Steel
HDG oversized - Zinc Plated - Plain



Other



Connecting Nuts for Dywidag Tie Rods

Different sizes

Eye bolts

DIN 580 - DIN 582



Extension nuts

DIN 6334 and special

Cotter pins / Split pins

DIN 94 - ISO 1234 and special



Scan and find out more



All-Round Partner

We are able to offer our Customers a wide range of solutions that cover the entire life cycle of the products

Heat Treatments

We manage heat treatments such as quenching and tempering on carbon steels, alloy steels, and special alloys, using furnaces with controlled atmospheres.

Surface Treatments

A large part of our product range is subjected to hot-dip galvanizing in accordance with UNI/EN/ISO 1461, ASTM A153, and EN 10684. We also offer white zinc plating with thicknesses of 5, 8, and 12 microns, Tropical high-resistance passivation, zinc flake coatings, and further treatments upon customer request.

Mechanical Machining

We perform operations such as customized marking, thread oversizing for nuts, thread downsizing of screws, drilling, turning, thread restoring, slotting, bending, and welding.

Services

Bulfer is able to offer a complete service: consulting, design support, scheduled order management, product certification, personalized packaging, and transport. We are a team of experts ready to satisfy every need.





Bulfer

for road safety

WEBSITE

www.bulfer.it

E-MAIL

info@bulfer.it

TELEPHONE

+39 02 42297650

OPERATIONAL HEADQUARTERS

Via della Repubblica 42
20090 Trezzano sul Naviglio (MI)
Italy

